

## About Schneider Electric

As a global specialist in energy management and automation with operations in more than 100 countries, Schneider Electric offers integrated solutions across multiple market segments, including leadership positions in Non-residential & Residential Buildings, Industries & Machines Manufacturers, Utilities & Infrastructure and Data Centers & Networks.

Schneider Electric provides solutions that represent the best in lifestyle and innovation for offices, hotels and homes. These solutions include award-winning products in the areas of building and home automation, structured cabling, and designer switches and sockets. They help the finest architectures around the world to achieve more with less.



'Switch to the  
extra-ordinary'

### Schneider Electric India Pvt. Ltd.

Corporate Office  
9th Floor, DLF Building No.10,  
Tower C, DLF Cyber City, Phase II,  
Gurgaon - 122002, Haryana.  
Tel: 0124 3940400, Fax: 0124 4222036  
[www.se.com/in](http://www.se.com/in)

Customer Care Centre  
Toll-free numbers: 1800 103 0011, 1800 425 4272  
General number: 0124 4222040  
Email: [in.campaign@schneider-electric.com](mailto:in.campaign@schneider-electric.com)

Life Is On

**Schneider**  
Electric

[se.com/in](http://se.com/in)

Life Is On

**Schneider**  
Electric



## Your favourite Livia switches are now antibacterial

Beauty meets safety with the Antibacterial Livia range of switches. Schneider Electric uses silver-ion technology solution that works together with your regular cleaning practices to help keep switches and cover plates germ-free. In a world where clean surfaces are proving to be essentials and lifesavers, a self-disinfecting switch surface will ensure peace of mind.

### Advanced Features:



Germ Free Environment with 99.9% reduction in bacteria \*



Self-disinfecting switch surface.



Anti-Bacterial technology with micro silver ions.



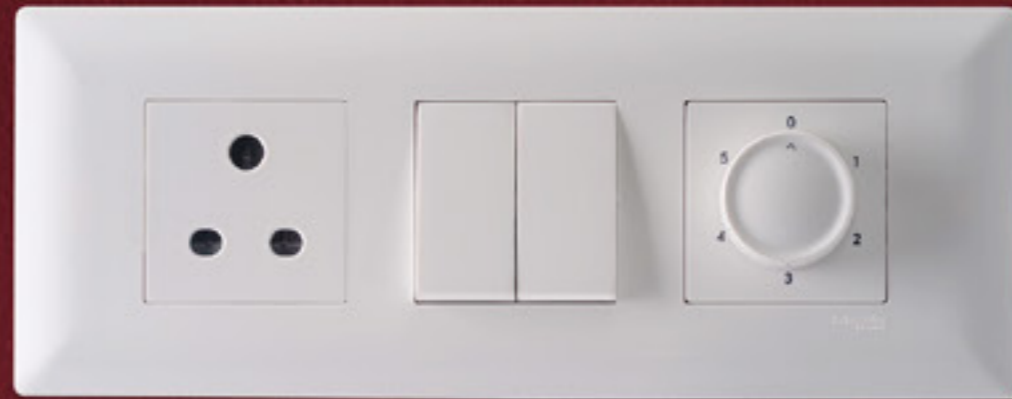
Tested and validated as per global safety standards.

\*tested as per International standard in the third party lab.  
for more details visit [www.se.com/in](http://www.se.com/in)

# With style that accentuates your choice

Your lifestyle is an expression of who you are. In keeping with this, Schneider Electric introduces many innovative, elegant and durable switches worldwide.

- You can choose the right switch to enhance your own lifestyle. Schneider Electric's range of switches, LIVIA, combines gorgeous looks with outstanding functionality.
- These sleek yet curved switches guarantee to be the perfect addition to any household or workspace.
- True to its name, the beautifully crafted LIVIA brings a peaceful and enduring style with a subtle edge to every room. It is time to make a statement.



## Features that create a lasting impression

LIVIA, Schneider Electric's range of effervescent switches and sockets are aesthetically designed and blend in well to stand out.

A bouquet of long lasting features makes LIVIA a reliably long lasting range



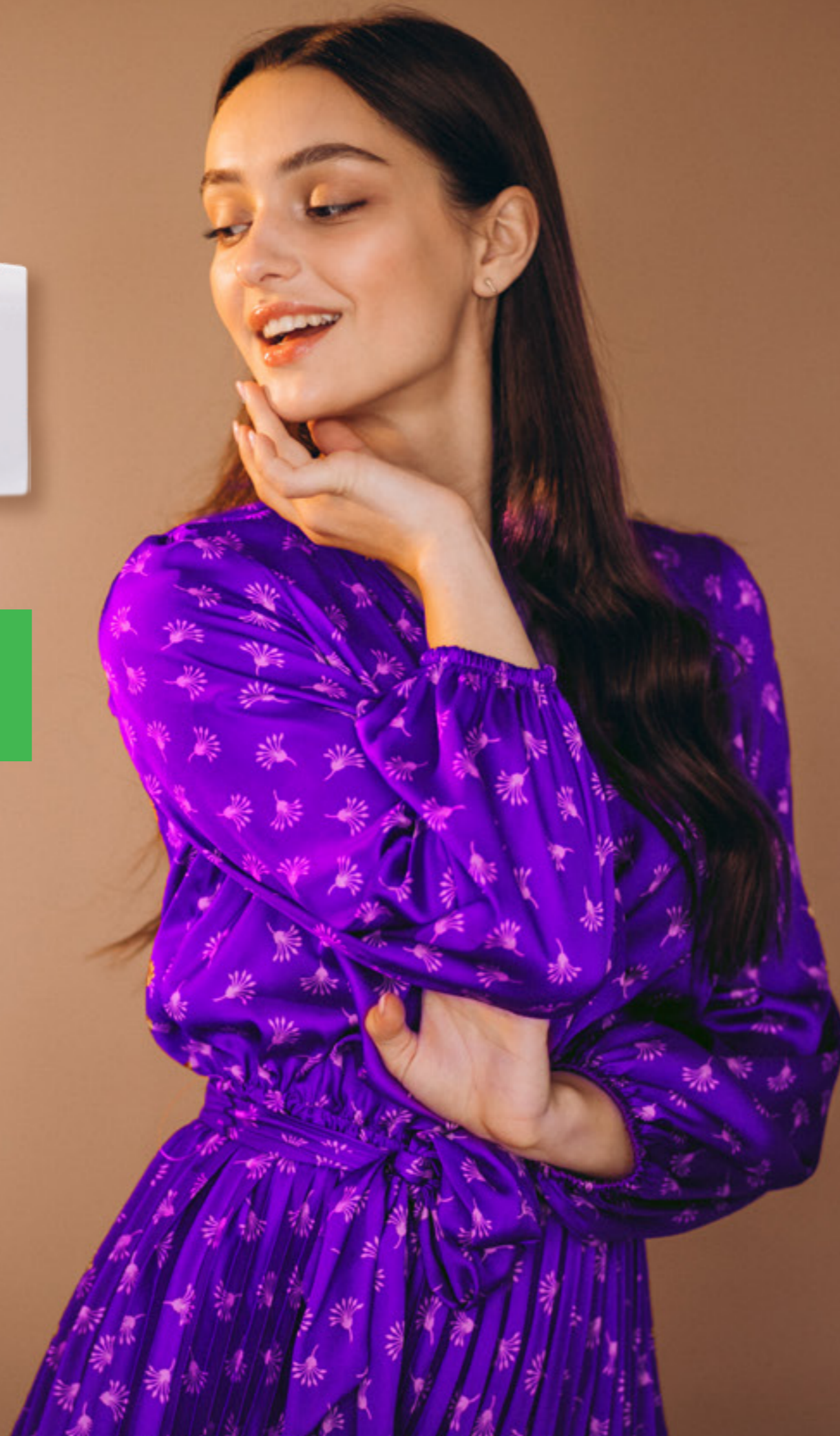
**LIVIA**  
Life. Style.





Designed to Impress

STYLISH, SAFE, RELIABLE



- **Soft white texture with high gloss finish**  
**Colors** - match well with a wide variety of interior decor
- **High Gloss Finish** - Cleaner look and feel
- **Free flowing surface design** - Isoline Design A charmingly elegant design flow to stop dirt from accumulating
- **2.7mm thickness of the plates on all four sides** - Hugging perfectly to your walls and its free flowing surface design makes the surface dust-free

All these features makes LIVIA as a Low maintenance range\*



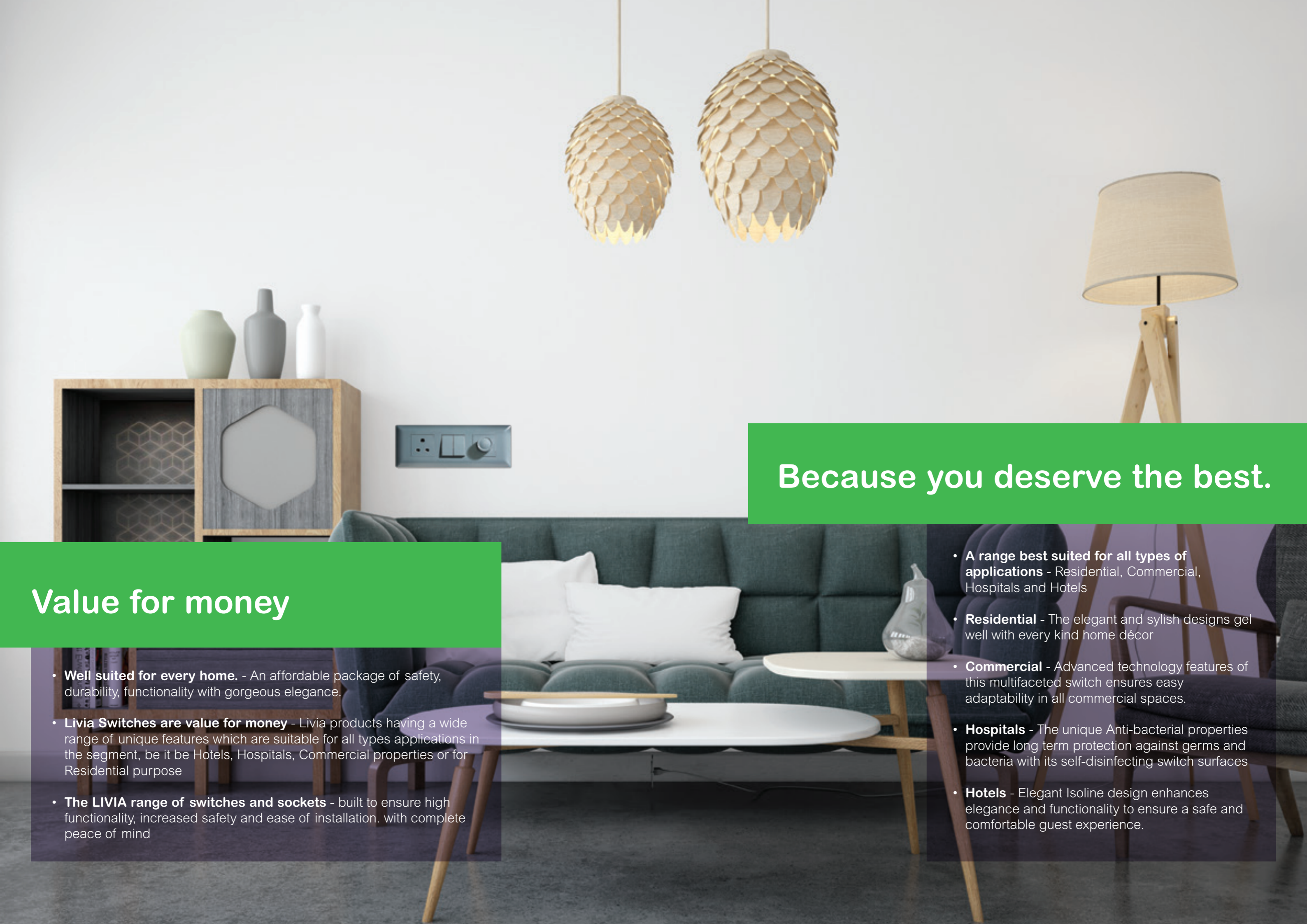
## Protective Rings of Safety and Durability

### Hassle free usage - operate, maintain and install

- **360-degree regulator knob and hum free operation** - Easier installation and maintenance
- **Low maintenance range** - A range so easy to maintain and clean because of the innovative design, sleekness and glossy finish
- **Front loading modules** - for easy snap-in and snap-out functions
- **Bigger terminal holes** - Optimally sized terminal hole for easier insertion and removal.
- **Laser marked wiring diagram** - Laser marked wiring diagram ensures correct switch orientation and ease of installation.



- **Copper bridge, silver inlay contact, anti-welding mechanism** - Lasts longer for a better performance
- **Phosphor bronze grip and nylon shutter** - Added safety and durability for your sockets
- **Built-in spark shield** - Adding extra safety for you by ensuring that no spark is visible
- **Honeycomb design for extra strength** - Provides added strength to the grid plate.
- **IP 20 Protection** - Heat resistant surface ensures a pleasant and safe touch experience.



Because you deserve the best.

## Value for money

- **Well suited for every home.** - An affordable package of safety, durability, functionality with gorgeous elegance.
- **Livia Switches are value for money** - Livia products having a wide range of unique features which are suitable for all types applications in the segment, be it be Hotels, Hospitals, Commercial properties or for Residential purpose
- **The LIVIA range of switches and sockets** - built to ensure high functionality, increased safety and ease of installation. with complete peace of mind

- **A range best suited for all types of applications** - Residential, Commercial, Hospitals and Hotels
- **Residential** - The elegant and stylish designs gel well with every kind home décor
- **Commercial** - Advanced technology features of this multifaceted switch ensures easy adaptability in all commercial spaces.
- **Hospitals** - The unique Anti-bacterial properties provide long term protection against germs and bacteria with its self-disinfecting switch surfaces
- **Hotels** - Elegant Isoline design enhances elegance and functionality to ensure a safe and comfortable guest experience.